

# Expressions of Interest

## Rosny Farm Exhibition Program 2026



City of  
Clarence



Rosny  
Farm

# Contents

Applications  
About our Venues  
Gallery Features  
Floorplans  
Guidelines & Conditions  
Selection Process & Criteria  
Provisions for Exhibitors  
Public Programs  
Responsibilities & Guidelines



The City of Clarence is calling for applications from those wishing to participate in its 2026 exhibitions program at Rosny Farm venues, the Schoolhouse and the Barn. We aim to present a diverse program that includes a balance of emerging and established artists as well as artists from a diversity of age, background, gender, culture and ability. Practitioners in any field of creative endeavour are eligible to apply, including (but not limited to) visual arts, design, new media, craft, and fashion.

The City of Clarence accepts applications from local, interstate and overseas artists, curators, arts collectives, and organisations.

Applications to exhibit can be for solo shows or curated group shows. (Note: A limited number of solo shows are programmed each year). The curatorial committee prefers applications based on new work or substantially reworked exhibitions.

We are committed to respecting and promoting the culture, heritage, and history of Tasmanian Aboriginal Peoples. We encourage applications from Aboriginal artists and practitioners, and we strive to provide opportunities that honour First Peoples' ongoing connections to these lands and waters.

The current call for Expressions of Interest covers the exhibition period from January to December 2026.

# About Our Venues

Situated within the vibrant Hobart arts landscape, Rosny Farm occupies a unique position by offering a distinctive blend of historical and contemporary art experiences. As the eastern shore's key cultural hub, we provide a platform that bridges local heritage with innovative artistic practices, contributing to the rich tapestry of Hobart's artistic community. Our commitment to fostering diverse artistic expressions makes us a vital part of the broader region's cultural conversation.

The site has important historical roots as a fine example of an early walled farmyard containing a beautiful heritage listed sandstone barn and farm cottage. The site itself represents the opportunity for artists to consider outdoor installation/exhibitions in a variety of media.

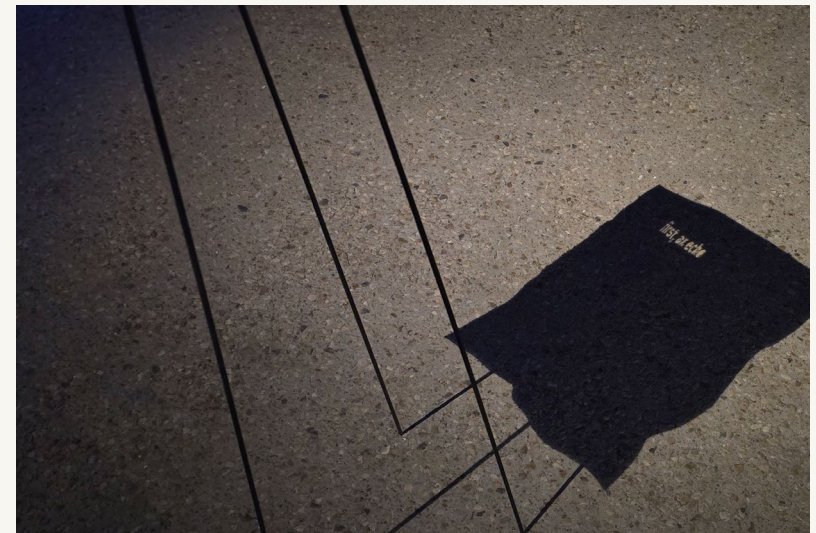
The Schoolhouse is the newest building on the Rosny Farm site and is a replica of a schoolhouse that was built at Osterly in central Tasmania in 1890. The Schoolhouse hosts approximately 14 exhibitions annually ranging from professional artists to community groups and schools. The gallery also hosts associated arts workshops and a very popular and vibrant school holiday arts program.

The Barn at Rosny Farm is a multi-purpose, small capacity arts venue. The venue is a c1818 stone barn which has been tastefully refurbished to retain its colonial aspect whilst catering to a broad range of arts-based activities. The Barn is suitable for larger scale exhibitions and installations by negotiation. Please contact the gallery first if you are planning on applying for this space.

Rosny Farm lawns surround the buildings on the site, the grounds present the opportunity to display outdoor sculptures, large-scale public works, and ephemeral installations. Please contact the gallery team first if you are planning on applying for this space.



"Devotion", works by Abbie Calvert and Cassie Sullivan, curated by Esther Toubert, The Schoolhouse, 2023



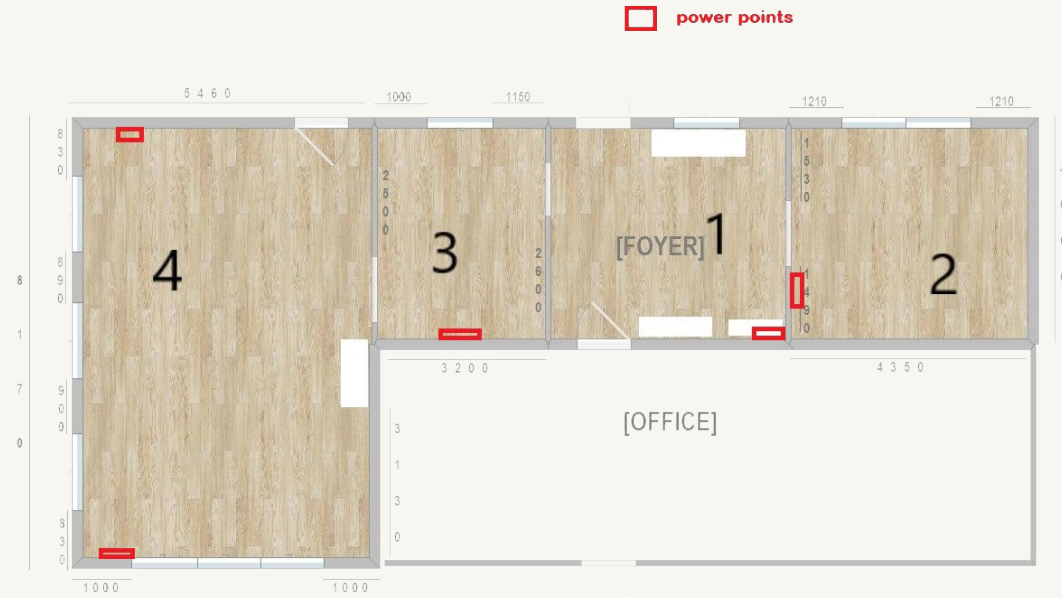
"To know a river", Hannah Foley, The Barn, 2024

# Gallery Features

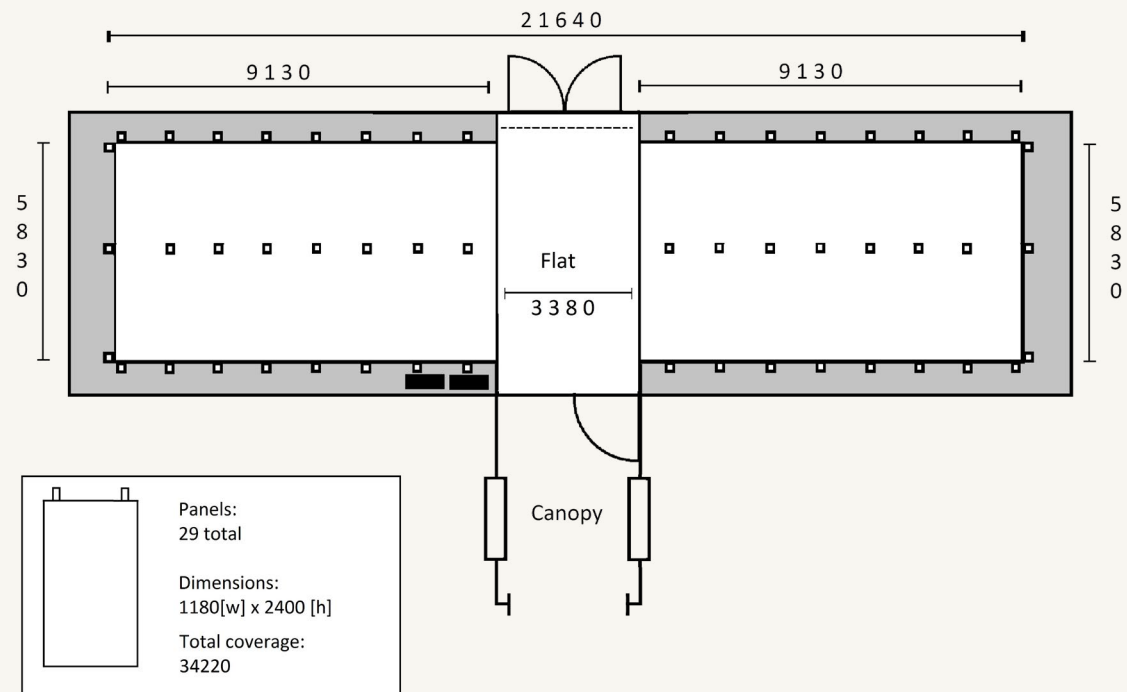
- Gallery spaces of varying size. Running meterage for the Barn is approximately 34 metres and the Schoolhouse Gallery is 46 metres. The Schoolhouse also suits running two smaller complimentary shows concurrently with spaces around 27 metres and 17 metres in lineal size.
- Professional gallery lighting system
- Some spaces suitable for suspending artwork
- Professional hanging system
- A selection of gallery plinths and shelving (various sizes)
- Various media equipment, including data projectors, media players and screens, TVs, audio players and speakers
- A range of event-ready equipment, such as chairs, tables, kitchenette
- Ladders, dollies and installation equipment
- Accessible gallery spaces and toilets
- Outdoor area
- Provision of EFTPOS for artwork sales
- Access to COLLECT Art Purchase Scheme

# Floorplans

The Schoolhouse



The Barn



# Exhibition Guidelines and Conditions



"milaythina mana", Danny Gardner, Schoolhouse Gallery, 2025  
Photo: Rosie Hastie

## How to apply

Applicants are required to complete an online application form via [www.clarenceartsandevents.net](http://www.clarenceartsandevents.net)

All applications must include:

- A curatorial proposal providing a clear description of the exhibition concept, a description of the exhibition's physical presentation or layout, how the opportunity will contribute to the artist's practice and / or objectives, and its relevance to contemporary art practice and / or the local community.
- A CV or biography for each artist providing an overview of their practice and an outline of their exhibition history, publications and any relevant qualifications.
- Ideas for potential public programs to complement the exhibition. These could include panel discussions, workshops, film screenings, performances or other related activities.
- 5-10 high-resolution images of the proposed works or examples of the artists recent practice labelled with artist name, artwork title and year.
- Online links to video or sound-based artworks, if applicable.
- Preferred month/s for exhibition\*.
- Preferred space/s for exhibition\* (see floorplan).

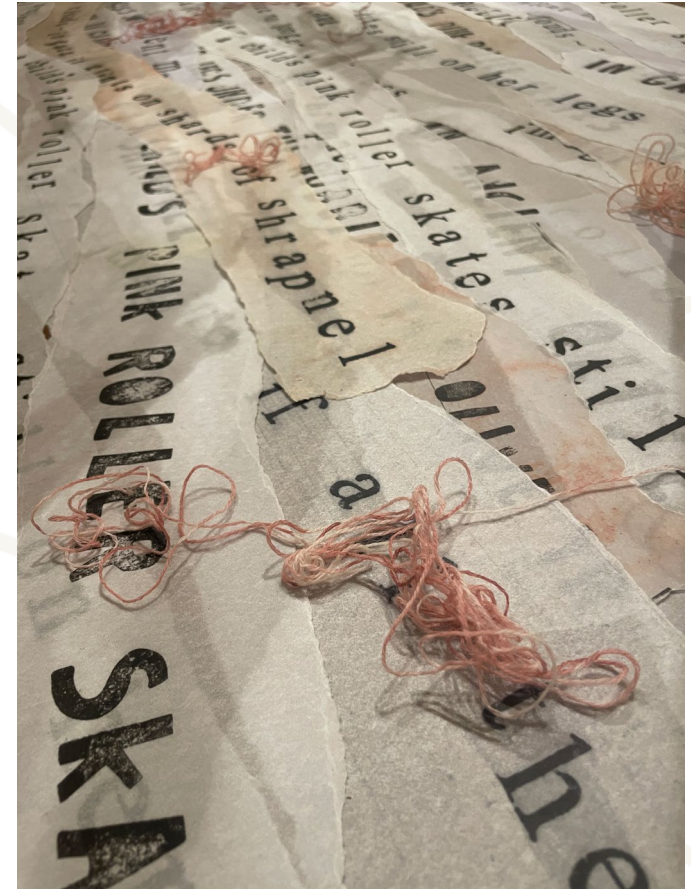
\*Note, due to our scheduling, we are not always able to accommodate these preferences

# Selection Criteria & Process

Exhibition proposals are evaluated by an EOI Assessment Committee comprising members of Council's City Culture team.

## Key considerations:

- Originality, excellence and innovation
- Suitability to the exhibition space
- Demonstrated capability of the proponents to deliver
- Relevance to contemporary art and/or the local community
- Contribution to a diverse calendar of exhibitions in terms of content and approach
- Potential to contribute to the Gallery's public program of workshops, talks and participatory activities
- Cultural, historical or educational significance, if applicable
- Suitability for visitors of all ages and backgrounds
- The capacity to meet all requirements in this document and the Exhibition Agreement
- Potential for the proposed exhibition to overlap with broader council programs or priorities (for example Clarence Jazz Festival, NAIDOC or Seniors Week etc.)



"The first step is not to turn away", Lou-anne Barker, The Schoolhouse, 2025

# Selection Criteria

All applications are assessed in accordance with the following criteria:

- **Artistic Merit** - Is the proposed project conceptually, technically, and aesthetically strong? Are the concepts clearly communicated? Is there a clear thematic to the project (e.g - mediums or subject specific).
- **Feasibility** - Is the project well planned and achievable and well suited to the exhibition spaces? The proposal should consider the technical aspects of displaying the work, and the safety of both the artworks and the people involved.
- **Relevance** - Is there potential of proposed exhibition to engage with the public and support the development of an artistic community? Is the core concept reflective of current concerns (social, political, environmental)? Is the project timely?



"Nexus: Totality", Wona Bae + Charlie Lawler, The Barn, 2025. Photo: Rosie Hastie

# Provisions for Exhibitors

This opportunity is aligned with the values and objectives in council's Cultural Creative Strategy 2022 - 2032, placing artists at the centre of our efforts. By providing valuable resources, professional development and support services, we aim to ensure every exhibition is a success, helping artists achieve their creative goals and connect them with new audiences.

Council provides:

- Approximately 4 weeks exhibition, free of charge (includes 1 week in total for install / de-install)
- Installation and de-installation of the work with the assistance of experienced staff
- Curatorial and professional advice
- Administration of sales
- 25% commission on sales compared with industry standard 50%
- A significant advertising and marketing campaign, including social media support, advertisements in relevant publications, emails to our database and inclusion in the program's electronic and hard copy newsletters
- Presence on the Clarence Arts and Events website [www.clarenceartsandevents.net](http://www.clarenceartsandevents.net)
- Exhibition opening event, including refreshments, staff for opening function
- Openings are the first Thursday night of the exhibition period from 5.30 - 7.30pm, or Sundays 2.00 – 4.00pm during winter, unless otherwise negotiated.
- Staff for invigilation of the exhibition (Wednesday-Sunday)
- Exhibitions will be open to the public for visitation 11.00am - 5.00pm Wednesday to Sunday, 10.00am – 4.00pm during winter months. The gallery is closed on Mondays, Tuesdays, between Christmas and the first week of January and over the Easter public holidays.



# Artist Talks and Public Programs

Public programs by way of artist talks, panel discussions, film screenings, workshops or demonstrations are encouraged. These events provide a valuable opportunity for exhibitors to connect with the audience and expand on their practice. Successful applicants will have the opportunity to develop a public program in consultation with our Gallery Coordinator.

## Exhibitor Responsibilities

Upon acceptance of an exhibition, the Gallery will supply an Exhibition Agreement outlining terms and conditions, obligations of both parties and a timeline to deliver the following assets to assist with development of the exhibition catalogue and marketing outputs:

- Gallery site visit
- Provision of 5-10 suitably labelled, high resolution images to use in design and promotional material
- Provision of a 100-word statement about the exhibition
- Provision of a 100-word bio for each participating artist
- Provision of social media handles for each participating artist
- Exhibitors are expected to attend the installation, opening night, artist talks, and de-installation



“Longing for less”, Paul Snell, The Barn, 2021

# Guidelines for Display

Confirmed exhibitors will be provided with guidance on optimising the presentation of their work to ensure a professional outcome. Artworks must be original creations of the artist and be presented in an appropriate manner. Artworks that are wet or pose a safety risk will not be accepted for exhibition.

Exhibitors must engage in discussions and obtain approval for all aspects of the exhibition, including artworks, display methods, exhibition furnishings such as plinths or shelving, interactive elements, and time-based media.

The gallery is a public venue that welcomes visitors of all ages and backgrounds. Therefore, artworks containing sexually explicit imagery, offensive content, racism, cultural insensitivity, or graphic violence will not be exhibited.

# Guidelines for Installation and De-installation

Installations will generally occur on the Tuesday and Wednesday of the exhibition. De-installation normally occurs on the Monday following the exhibition closure. The Exhibitor will collaborate with the Gallery team on the installation of the exhibition but final sign-off sits with Gallery staff.

All artwork packaging must be removed from the premises after installation, unless otherwise organised with staff, and all unsold artworks must be collected during de-installation.

When lodging your application, please indicate what your first preference would be and note that final gallery allocation will be at the discretion of the EOI Assessment Committee.

For any enquiries please contact:

Rosny Farm  
Lot 2/22 Rosny Hill Road  
Rosny Park TAS 7018

[schoolhouse@ccc.tas.gov.au](mailto:schoolhouse@ccc.tas.gov.au)  
03 6217 9607  
[www.clarenceartsandevents.net](http://www.clarenceartsandevents.net)



City of Clarence pays respect to all First Peoples, including the Mumirimina (mu mee ree mee nah) of the Oyster Bay Nation whose unceded lands, skies, and waterways we are privileged to conduct our business on. We pay respect to Elders past and present, and we acknowledge the survival and deep spiritual connection of the Tasmanian Aboriginal People to their Country, and culture; a connection that has endured since the beginning of time.

